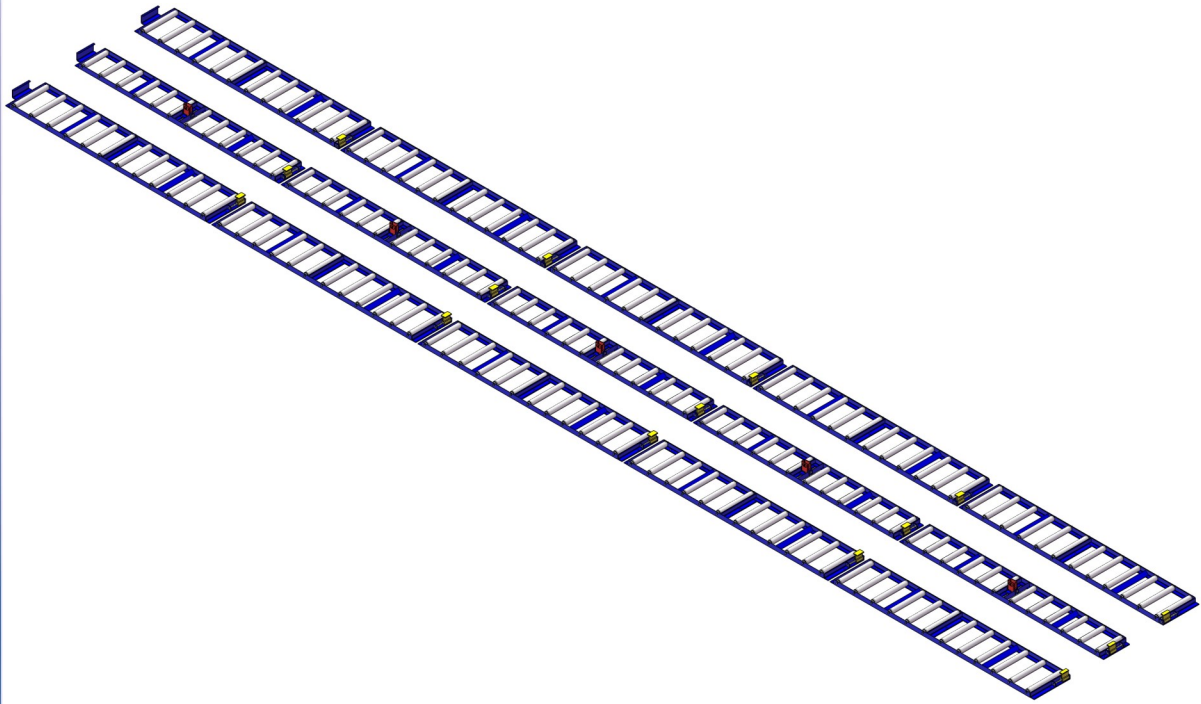




15F2843

53' Truck Slave System



Building Quality Ground Support Products Since 1961

- Capacity: (5) LD 7's or (10) LD 3's or combination of both
- Three tray design bolts down to deck of enclosed trailer
- Vertical restraint stops
- Durable powder coat finish

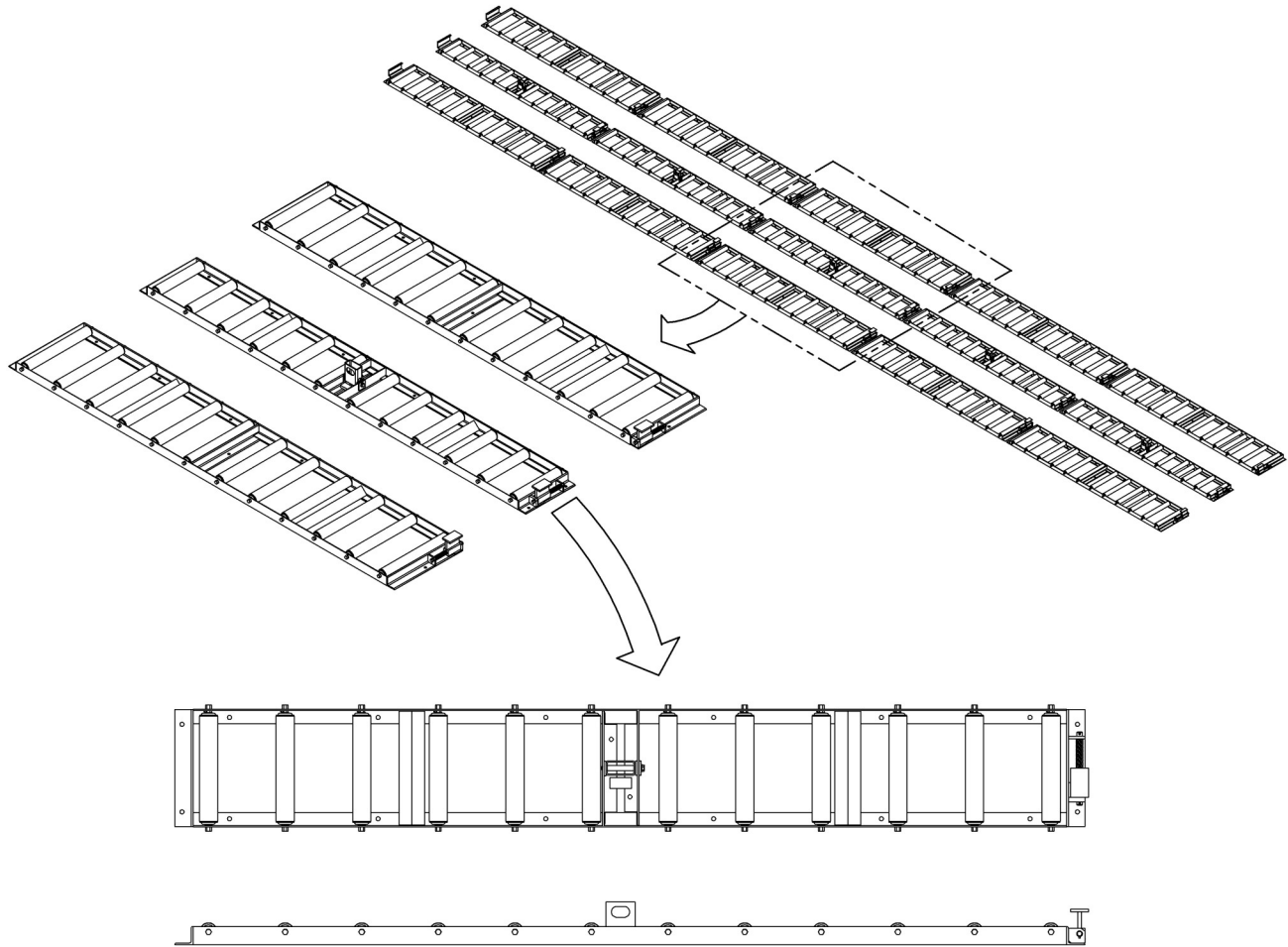
CLYDE

Clyde Machines
P.O. Box 194
1150 Hwy 55 N.
Glenwood, MN 56334 USA
(320) 634-4504
(320) 634-4506 Fax

www.clydemachines.com

15F2843

53' Truck Slave System



Shipping Information

- Total system weight: 3,100 lbs.

CLYDE

Clyde Machines
P.O. Box 194
1150 Hwy 55 N.
Glenwood, MN 56334 USA
(320) 634-4504
(320) 634-4506 Fax

www.clydemachines.com