



15F3340

Flyaway Towbar



Building Quality Ground Support Products Since 1961

- PN 15F3340 is the body only, see page 2 for head options
- This flyaway towbar is available with any quick change head
- Towbar halves are secured by a removable pin secured by a chain
- Towbar made of high strength steel tube
- Durable powder coat finish
- Extra set of shear bolts included

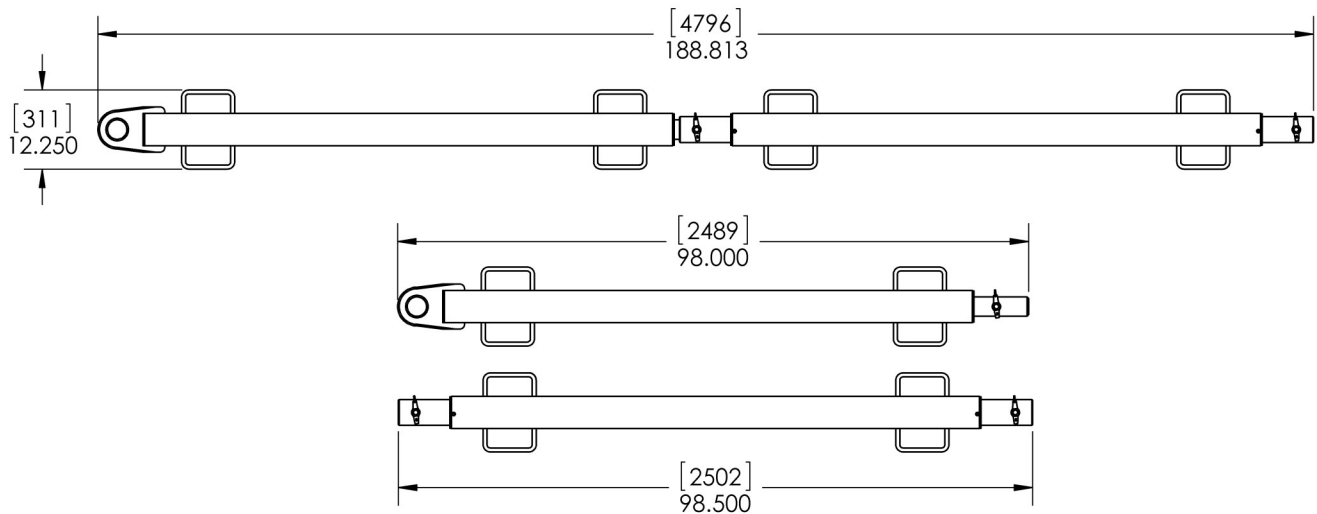
CLYDE

Clyde Machines
P.O. Box 194
1150 Hwy 55 N.
Glenwood, MN 56334 USA
(320) 634-4504
(320) 634-4506 Fax

www.clydemachines.com

15F3340

Flyaway Towbar



- Head options:
 - 15F2539 B727 clamp type
 - 15F2518 A300/310, B727
 - 15F3813 B737 100-900
 - 15F3364 B737 600-900 + Max + NG
 - 15F3365 A318-A321 NEO
 - 15F2519 B757
 - 15F2549 Fokker 70/100
 - 15F3736 A220 100/300

Shipping Information

- Shipping Dimensions
 - Weight w/head - 240 lbs.
 - Weight w/o head - 180 lbs.
 - Length — 189"
 - Width — 12"
 - Height — 6"
- Crated Dimensions:
 - Weight w/head - 470 lbs.
 - Weight w/o head - 410 lbs.
 - Length — 120"
 - Width — 24"
 - Height — 16"
 - 60 lbs. per extra head

CLYDE

Clyde Machines
P.O. Box 194
1150 Hwy 55 N.
Glenwood, MN 56334 USA
(320) 634-4504
(320) 634-4506 Fax

www.clydemachines.com